

Challenge

Limited awareness and understanding of social entrepreneurship among youth, stakeholders, and the public hinders the growth of social enterprises and their potential for social impact.

Who is EPIC for?

Youth (16-30 years old) in AL, BA & XK
Youth workers in AL, BA & XK



For more information, visit our website

epic-project.eu/

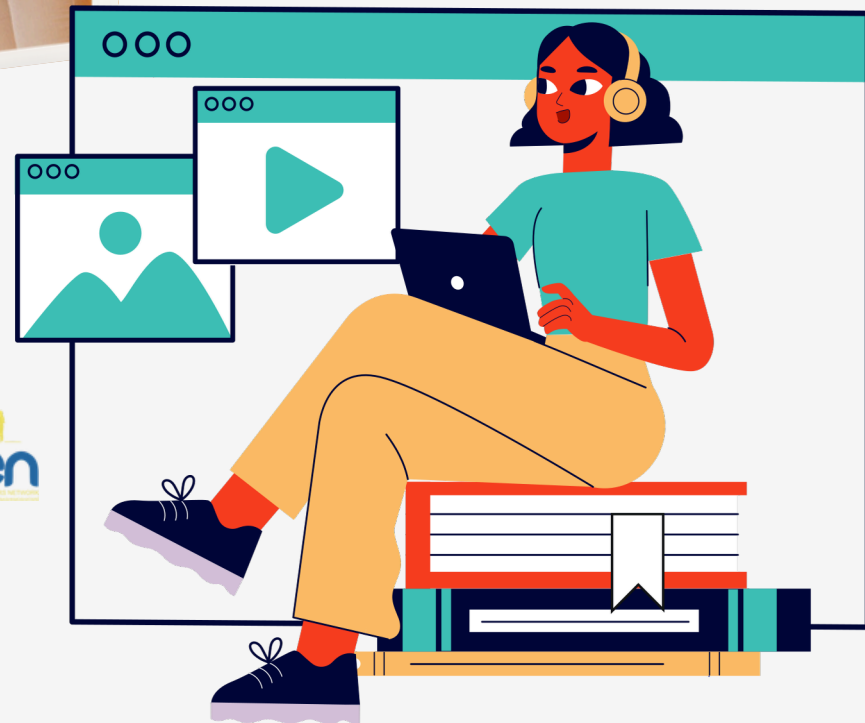
or contact us at:

epic-project@kmop.org

Project Partners:



Funded by the European Union. Views and opinions expressed are however those of the author(s) only and do not necessarily reflect those of the European Union or the European Education and Culture Executive Agency (EACEA). Neither the European Union nor EACEA can be held responsible for them.



EPIC aims to **foster entrepreneurial citizenship among youth** in Western Balkans

Innovation

EPIC equips youth organisations with tools and resources to **help young people establish and operate social enterprises**, encouraging them to address social challenges actively and influence their communities.



Action

Training Programme on Social Entrepreneurship

Designed for youth workers and young people to enhance their social entrepreneurship skills.

Introduction to Social Entrepreneurship

The EntreComp Framework

Linking Social Work/Initiatives and Entrepreneurship

Social Entrepreneurship Skills

Social Business Model and Planning for Social Innovation

Identifying Social Entrepreneurship Opportunities

Toolkits for Development & Operation of Social Enterprises

Practical tips, guidelines, and tools for youth workers and young people.

Toolkit for Youth Workers

Support youth in building and managing social enterprises.

Toolkit for Youth

Develop and operate social enterprises using the EntreComp Framework.

